

# Exit Lane Breach Control

Creating Secure Environments



# Security and Safety

Preventing unauthorised access

- Over 17 years experience in providing reliable exit lane solutions
- Over 1 400+ proven, successful installations throughout the world
- Highest security level – driven by continuous innovations
- Many long term relationships with customers

The record FlipFlow provides a high level of security for a wide range of applications. The user friendly, one-way traffic, security system delivers a high volume throughput, without jeopardising controlled access.

Featuring advanced detection and control technology, integrated with functional and reliable barrier components, the FlipFlow provides security and safety in a practical, modular construction. The non-intrusive style does not impede pedestrian flow. The structural design is robust and easily maintained. Delivers safety and security at the desired level while being user friendly and easily maintained.





# References worldwide

record FlipFlow all over the world

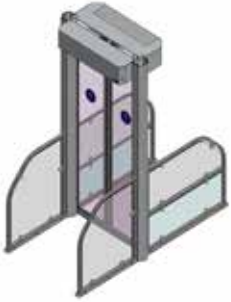



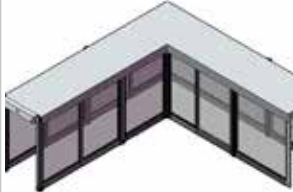
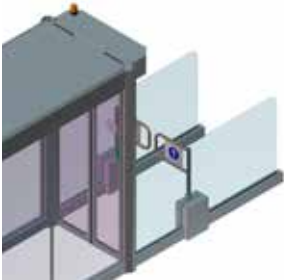
USA	NL: Amsterdam
Seattle	Spain
Kalamazoo	Barcelona
Eugene	Las Palmas
Plattsburgh	Madrid Barajas
Lubbock	Valencia
San Jose	Alicante
Sacramento	Gran Canaria
Sarasota	Tenerife
Greenville	Bilbao
Charleston	Italy: Florence
Minnesota	Portugal: Lisboa
Canada	Croatia: Split
Halifax	Greece: Athens
Fort McMurray	Switzerland
Vancouver	Bale-Mulhouse
Denmark	Zurich
Billund	Geneve
France	United Kingdom
Avignon	Glasgow
Bastia	Ireland
Bordeaux	Cork
Cannes	Slovenia
Grenoble	Narocilo Dobavitelju
Marseille	Belgium: Charleroi
Nice	Norway: Sandefjord
Paris Orly	Marocco: Casablanca
Strasbourg	Saudi Arabia: Riyadh
Lyon	Oman: Muscat
Germany	
Munich	
Nürnberg	
Stuttgart	
Düsseldorf/Karlsruhe/	
Baden-Baden	



FlipFlow

# Product range overview

Different concept for different needs

						
FlipFlow Version	WIDE	SINGLE	TWIN	TRIPLE	Customized lane designs**	Option: extended
Auto flow / interlock	—	—	●	●	●	●
Throughput flow	3 600 - 4 500 per hour		3 600 - 4 500* per hour			No influence
Throughput interlock	n/a		Approx. 500* per hour			No influence
record security level	●	● ●	● ● ●	● ● ● ●	● ● ● ● ●	+1 ●
Application examples	customs exits, security staff in immediate vicinity		barrier between airside / landside, exit baggage claim, automatic security staff alert			
Use / Application field	after baggage claim, exiting customs or used as a secure emergency egress opening	passport control	barrier between airside / landside transition areas to secure zones after baggage claim exit areas in airports automatic security staff alert customs exit			

\* Test automatic change from interlock to flow mode for higher throughput depending on counting of passengers

\*\* Customer specific solutions possible (e.g. 90° tunnel or other angled executions, side-by-side solutions, frosted glass)

# Effective flow control

High-volume throughput

## 3D imaging technology

- Reliable anti-return detection
- Works in total darkness
- Sabotage detection

## Static object detection

- on floor
- on side screens
- on ceiling

## Energy saving LED spots in the ceiling

## LED status indicator

## LED running lights for passenger guidance

- green wave: flow mode
- Static red: anti-return alarm
- Flashing yellow: technical alarm

## Simple maintenance and troubleshooting via tablet/ smartphone

## Remote access (Ethernet or Relay)

- Status information
- Various alarm signals
- Operating mode change

## record REAL TIME monitoring software

- Live status of all FlipFlows
- Live status, logs, automatic alerts



## Key Features

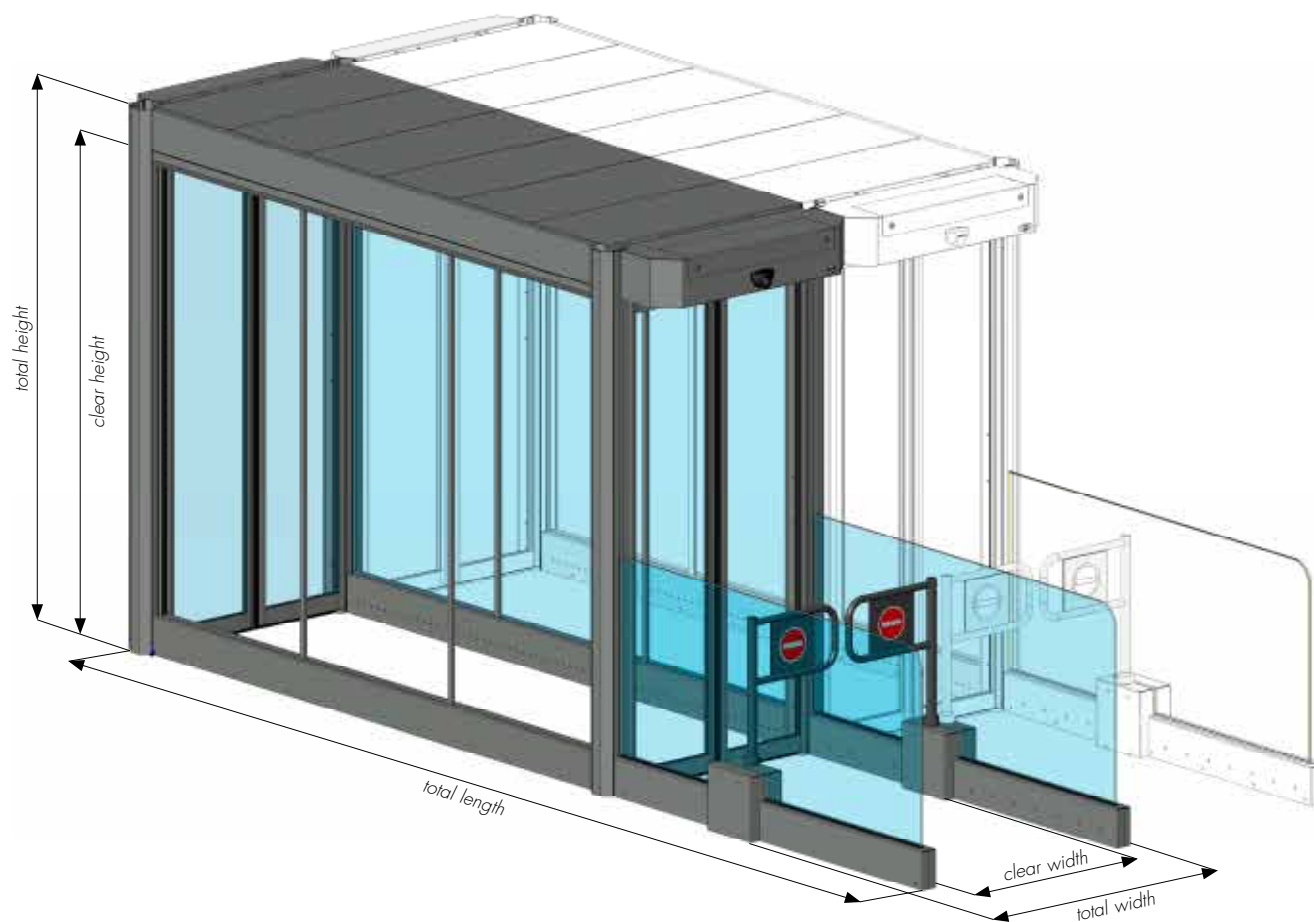
- Efficient and economic no-return system with high throughput
- Ensure highest level of security in secure areas (border, airside-landside, passport control, baggage claim & more)
- Configurable security level and multiple sensor options
- Innovative 3D imaging technology
- Allows reallocation or exclusion of security guard staff
- Fits easily into existing exit corridors
- Side-by-side installations possible
- Aluminum or stainless steel versions
- Four widths available: 650, 900, 1100, 1200mm

## Operation modes

- **Flow:** doors open and close automatically, security and safety is active
- **Interlocked:** Flow mode, but one door is always closed, security and safety is active
- **Auto Flow Interlock Mode:** automatic switch from Interlock Mode to Flow Mode as passenger volumes increase, in order to avoid queues while ensuring high security
- **Open:** security inactive, doors held open for VIP passage, emergency ingress & egress, etc.
- **Cleaning / maintenance:** security inactive, controlled access provided for service and cleaning personal only.

# Technical

Details and sizes



## Data

### WIDE

→ Total length	2 248 mm
→ Total height	2 365 mm
→ Clear height	2 150 mm

### TWIN

→ Total length	5 242 mm
→ Total height	2 365 mm
→ Clear height	2 150 mm

### TRIPLE

→ Total length	6 570 mm
→ Total height	2 365 mm
→ Clear height	2 150 mm

### OPTION EXTENDED

→ Total length	1 999 mm
----------------	----------

### VALID FOR ALL SYSTEMS

→ Clear widths	650, 900, 1 100, 1 200 mm
→ Total widths	980, 1 230, 1 430, 1 530 mm



# Our statement

record – the right partner for your needs

Our top priority is your complete satisfaction with the quality of our products and services.

By this we mean:

- Individual, professional advice in choosing security access solutions
- A wide range of high tech products to meet any security automation requirement
- Contemporary designs which are compatible with any architectural style or plan

Twenty-two subsidiaries in Europe, Asia and the United States, provide over 50 years of experience in manufacturing, sensor technology, electronics and software development for automatic door systems and related products. Satisfied customers all over the world have chosen record as their partner, make record the right partner for your installations too.



# FlipFlow

# Contact

Please contact us for more information:

## → record UK Limited

Head Office: Unit D, 9 Watt Place, Hamilton International Park, Blantyre, G72 0AH – UK

Northern Office: Unit 2, Shaw Cross Court, Horace Waller V C Parade, Shaw Cross Business Park, Dewsbury, WF12 7RF – UK

Midland Office: Pattison House, Midland Road, Walsall, WS1 3DQ

Southern Office: 17 Invincible Road – Farnborough, GU14 7QU – UK

tel.: +44 1698 376411 – fax: +44 1698 376422 – [info@recorduk.co.uk](mailto:info@recorduk.co.uk) – [www.recorduk.co.uk](http://www.recorduk.co.uk)

**Headquartered** in Switzerland, the record group sells its products and services across the globe and is directly present with subsidiaries in many countries.

**Global sales and service contacts:** [www.record.group/countries](http://www.record.group/countries)

