

Create A Stylish Entrance – Curved and Circular Sliding Doors

Automatic curved sliding pedestrian doors, much like revolving doors, are a great way of creating a stunning focal entrance point to a building which is both welcoming and aesthetically appealing. They offer the benefit of maximising throughput capacity offering relatively unimpeded access to all building users.



Curved sliding door systems are available in several different variations from complete circular doors containing a pair of external and a pair of internal doors supported by a glazed drum to creating an entrance vestibule to single door suites to follow the curve of a façade to maintain an uninterrupted aesthetic.

High Pedestrian Flow Rate

Circular sliding doors create visually stunning entrances which provide the maximum clear opening in any given footprint, making them ideal in high pedestrian foot traffic environments, particularly at peak times in commercial offices, luxury shops, shopping centres, hospitals, hotels and leisure facilities.

Inclusivity

Circular sliding door systems are inclusive as they provide clear unrestricted and unobstructed access to all building users without the need for an additional pass door. When linked to a fire alarm system, they are also suitable for the final exit point for all. As standard, the operators used also contain an integrated battery backup unit to ensure emergency operation in the event of a power failure for compliance and peace of mind.

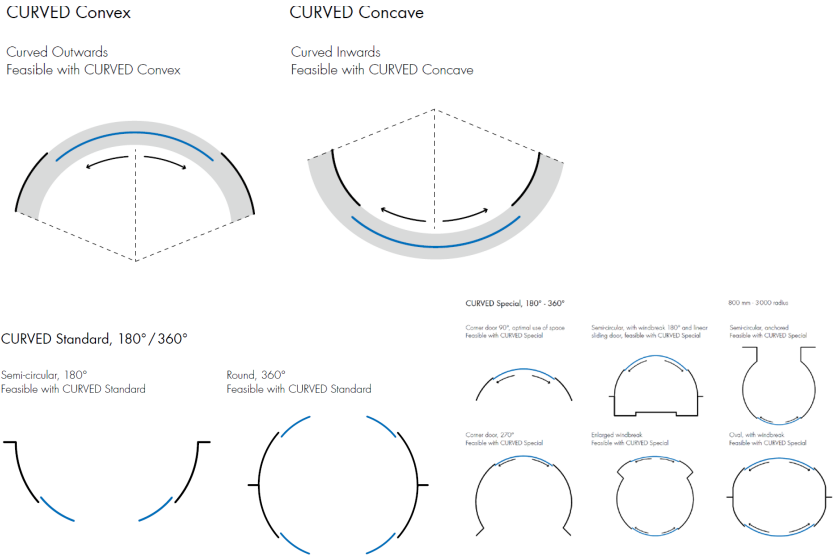
Aerodynamic Performance

When compared to a linear sliding door system for example circular sliding doors offer improved aerodynamic properties as they deflect and dissipate wind pressure much more effectively whilst reducing the ingress of cold air. The addition of a concealed warm air curtain further improves this.

Flexibility in Design

There are many options available for curved and circular sliding doors, including concave and convex designs. These enable architects and designers’ greater freedom to create individuality and intrigue in entrances using a varying degree of curvature or radius, which complements the architecture of the building.

Examples of Available Configurations

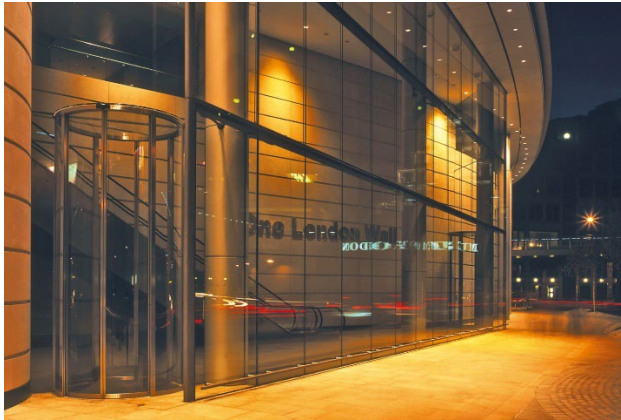


Drive Options

These include inground drives and overhead drives I will explain the benefits of each option below.

In-Ground

This is the best option when the light transmission is a priority because there is no need for a solid metal canopy above the opening to house the operator meaning that this can be substituted with a glass roof, further improving the aesthetic appeal. If a warm air curtain is required, then a vertical column type heater should be considered.



Over-Head

Suppose the operator is mounted above the opening leaves, then a warm air curtain can be concealed within the operator canopy as well as bespoke lighting systems and CCTV cameras etc. A minimal amount of space is required for a floor ring beneath the system meaning these might be more suitable when replacing existing doors or when there is limited available floor depth.



Façade Integration

Curved sliding doors can be integrated into multiple types of façade construction including curtain walling systems and all-glass screens with suitable façade connections. Specification teams are on hand to support the design of these elements.



Bespoke Designs

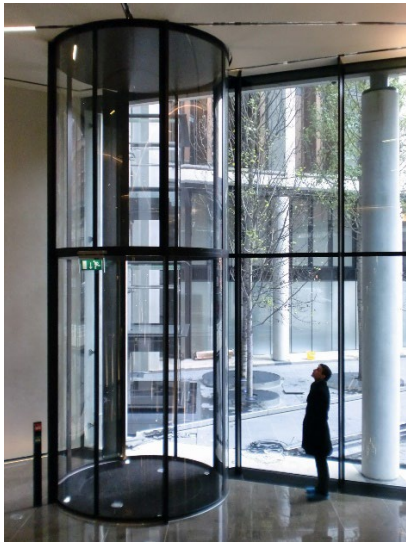
Some manufacturers can offer bespoke sizes with diameters up to 6000mm and passage heights up to 3500mm with the opportunity to incorporate an additional canopy above to increase the system height further maximising architectural freedom. However, the larger the door system the more consideration needs to be given to site delivery, service and maintenance, access, and indoor climate impact that these larger door systems attract.

Security

When building security is a priority in financial buildings, data centres and other secure establishments then enhanced security options are also available. From physical security options such as burglar-resistant glazing and electromechanical locking to operational security in the form of anti-piggy backing and anti-tailgating technologies. There is also the ability to add access control to a building with options such as iris and fingerprint scanning, facial recognition, and code card readers.

Finish Options

From simple RAL Specification polyester powder-coated finishes to bespoke metal finishes such as polished stainless steel and bespoke cladding. Most can be accommodated, and the earlier specification teams are involved in the design process the better.



Conclusion

In the end, it purely depends on what you require from your building entrance. Curved doors are less complex, inclusive by design, extremely flexible and can be used on escape routes. One thing is for sure, by choosing a curved door you will be assured of a grand, elegant yet functional entrance, that your building deserves.

James White

Specification Manager, Record UK

www.recorduk.co.uk